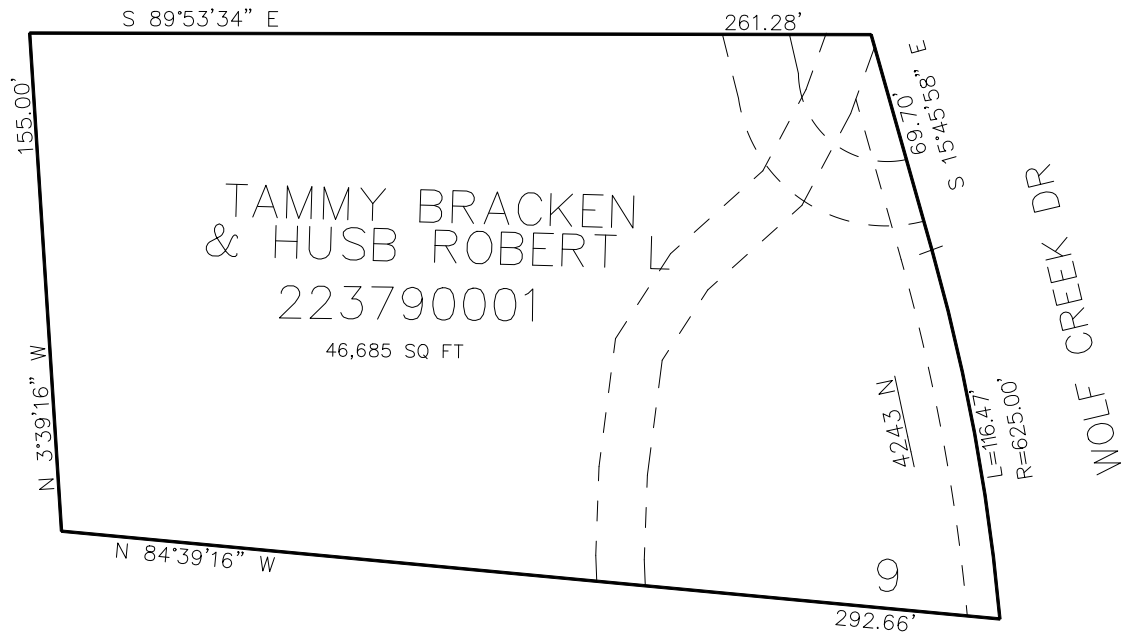


PART OF THE NW. 1/4, OF SECTION 22, T.7N., R.1E., S.L.B. & M.
HIDDEN OAKES AT WOLF CREEK 1ST AMENDMENT

IN WEBER COUNTY
 SCALE 1" = 30'

TAXING UNIT: 203

SEE PAGE 209



10' UTILITY & DRAINAGE EASEMENTS EACH
 SIDE OF PROPERTY LINES AS INDICATED
 BY DASHED LINES EXCEPT AS OTHERWISE
 SHOWN.

FOR COMPLETE ENC DATA SEE
 ORIGINAL DEDICATION PLAT IN
 BOOK 88, PAGE 56 OF RECORDS.